

Strategic Environmental Assessments (SEAs)

WESTERN CAPE PROVINCE PROVINCIAL & LOCAL GOVERNMENT CONSULTATION WORKSHOP

Identification of Strategic Power Corridors

Kevin Leask

Eskom, Grid Planning

25 November 2014

What is the Transmission Grid Network?

- The Transmission Grid Network is a system that is designed and constructed to deliver electrical power that is generated at one place to another place where it is consumed
- Voltage Level definitions/terminology in South Africa
 - Transmission is $> 132\text{kV}$
 - Distribution is $\leq 132\text{kV}$
 - Reticulation is $\leq 22\text{kV}$
- One Transmission licence in South Africa – Eskom
- Many Distribution licences

Role of the Transmission System Planner

- The function of the transmission system is to optimally and reliably transport the power from the source of generation to the location of the load
- Role of Transmission System Planner (TSP) flows from Eskom Transmission License issued by NERSA. TSP is required to conduct following activities for the *electricity supply industry*
 - To plan and augment the Transmission System
 - Planning to be in accordance with the Grid Code
 - Augmentation to take place subject to a connection agreement
 - Compliance is part of Eskom Transmission license
- **Network Code of SAGC specifies following for transmission planning**
 - Technical criteria
 - Voltage & thermal limits, reliability criteria, generation integration, etc.
 - Generator connection conditions (Protection, islanding, Governing , Black starting ,etc)
 - Connection conditions for distributors and end-use customers (Protection, Power factor, Fault levels, etc)
 - Planning Process
 - Investment Criteria

The Different Development Plans

Integrated Resource Plan

- The Department of Energy (Energy Planner) is accountable for the Country Energy Plan as per recently published regulations.
- The Country Plan is also termed the Integrated Resource Plan (IRP).
- The Integrated Resource Plan (IRP) is intended to drive all new generation capacity development.
- NERSA licences new generators according to this determination.

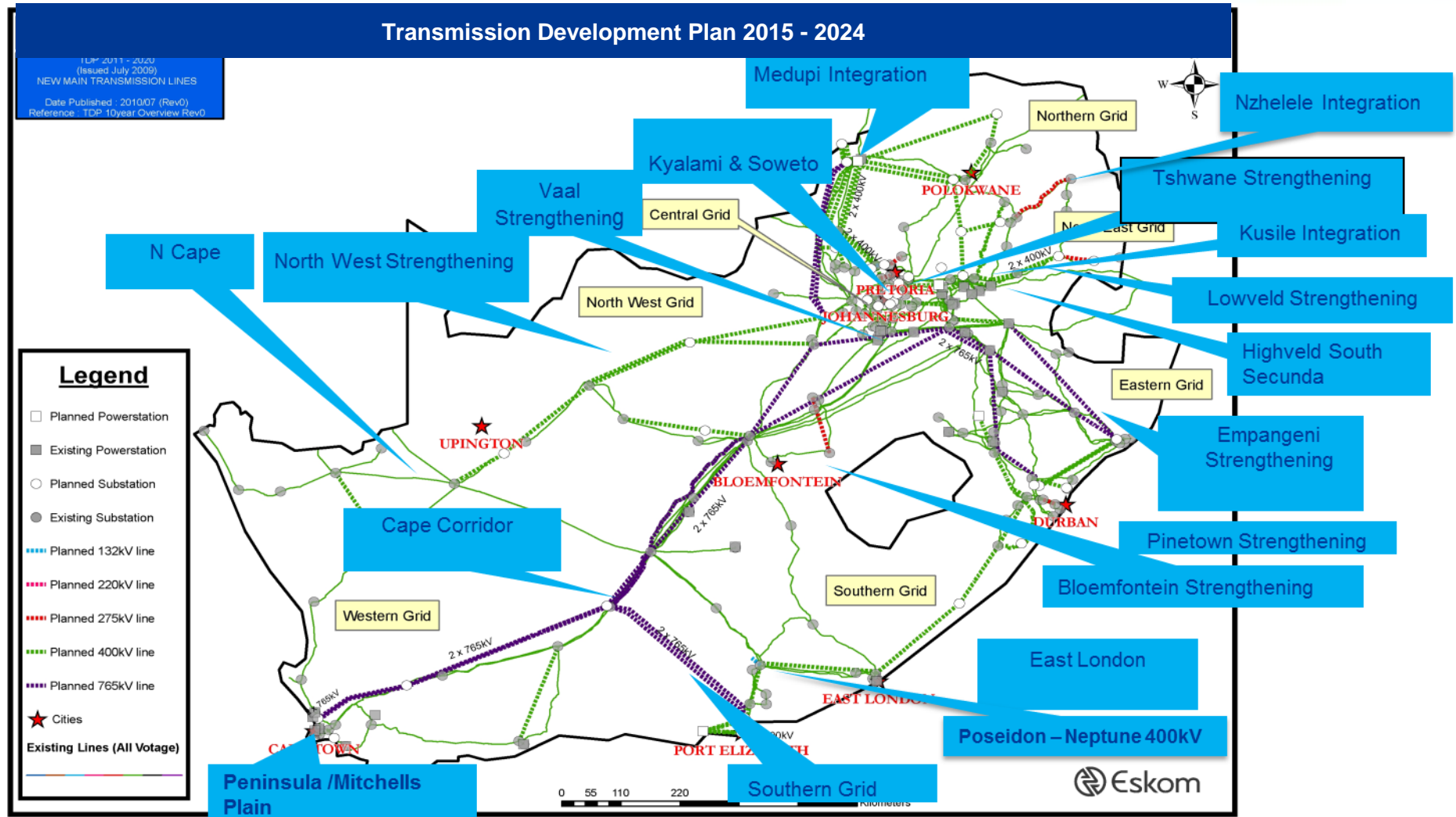
Strategic Grid Plan

- The Strategic Grid Plan formulates long term strategic transmission corridor requirements
- Plan is based on range of generation scenarios, and associated strategic network analysis
- Horizon date is 20 years
- Updated every 2-3 years

Transmission Development Plan

- Transmission Development Plan (TDP) presents transmission corridor requirements
- Plan covers a 10 year window
- Updated annually
- Indicates financial commitments required over 10 year period

Transmission Development Plan (TDP) Overview



STRATEGIC GRID PLAN

The 2010 Integrated Resource Plan

Table 1 – IRP2010 Policy Adjusted Plan with Ministerial Determinations

	New build options								Committed					Non IRP
	Coal (PF, FBC, imports, own build)	Nuclear	Import hydro	Gas – CCGT	Peak – OCGT ¹	Wind	CSP	Solar PV	Coal	Other	DoE Peaker	Wind ²	Other Renew.	Co-generation
	MW	MW	MW	MW	MW	MW	MW	MW	MW	MW	MW	MW	MW	MW
2010	0	0	0	0	0	0	0	0	380	260	0	0	0	0
2011	0	0	0	0	0	0	0	0	679	130	0	0	0	0
2012	0	0	0	0	0	0	0	300	303	0	0	400	100	0
2013	0	0	0	0	0	0	0	300	823	333	1020	400	25	0
2014	500	0	0	0	0	400	0	300	722	999	0	0	100	0
2015	500	0	0	0	0	400	0	300	1444	0	0	0	100	200
2016	0	0	0	0	0	400	100	300	722	0	0	0	0	200
2017	0	0	0	0	0	400	100	300	2168	0	0	0	0	200
2018	0	0	0	0	0	400	100	300	723	0	0	0	0	200
2019	250	0	0	237	0	400	100	300	1446	0	0	0	0	0
2020	250	0	0	237	0	400	100	300	723	0	0	0	0	0
2021	250	0	0	237	0	400	100	300	0	0	0	0	0	0
2022	250	0	1 143	0	805	400	100	300	0	0	0	0	0	0
2023	250	1 600	1 183	0	805	400	100	300	0	0	0	0	0	0
2024	250	1 600	283	0	0	800	100	300	0	0	0	0	0	0
2025	250	1 600	0	0	805	1 600	100	1 000	0	0	0	0	0	0
2026	1 000	1 600	0	0	0	400	0	500	0	0	0	0	0	0
2027	250	0	0	0	0	1 600	0	500	0	0	0	0	0	0
2028	1 000	1 600	0	474	690	0	0	500	0	0	0	0	0	0
2029	250	1 600	0	237	805	0	0	1 000	0	0	0	0	0	0
2030	1 000	0	0	948	0	0	0	1 000	0	0	0	0	0	0
Total	6 250	9 600	2 609	2 370	3 910	8 400	1 000	8 400	10133	1722	1020	800	325	800



2011 Determinations



2012 Determinations



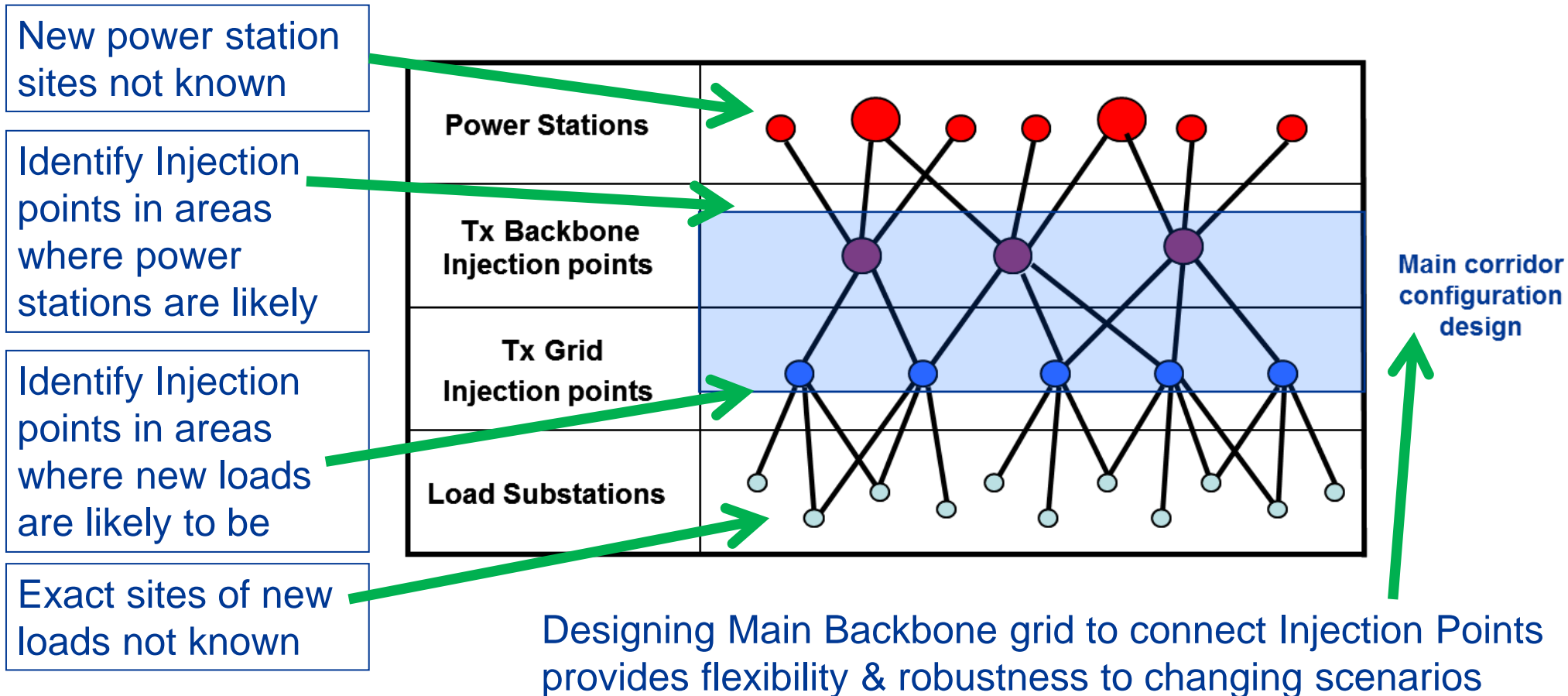
Eskom commitments (pre IRP)

Notes: 1. OCGT is seen as natural gas in the determination

2. Includes Sere (100MW)

Study Methodology – Design Philosophy

Layer model for substation requirements and network development



The Strategic 2040 Network Study

- Eskom has updated the 2030 strategic grid study to 2040
- Why 2040 - Most of the existing coal power stations in Mpumalanga will be decommissioned – what is the impact on the grid?
- Major difference between 2030 & 2040 studies is consultation with external stakeholders (such as renewable energy associations) for the development of the new generation scenarios
- 2010 IRP is the base scenario - however there is uncertainty on the location and actual performance of the generation sources, e.g. wind
- Three Generation Scenarios were selected

Proposed three Generation Scenarios

- **The IRP 2010 base Scenario (BASE IRP)**
 - IRP will be extended to 2040
 - Coal will be fixed at 2030 level
 - Balance in similar ratio to 2030 mix
- **Increased Renewables Scenario (GREEN)**
 - Replace nuclear component with RE base generation equivalent
 - CSP (with storage)/ Wind with CCV of 30% / Natural Gas
- **Increased Imports Scenario (IMPORT)**
 - Double imported power by 2030
 - Reduce coal & nuclear

Important Generation Assumptions

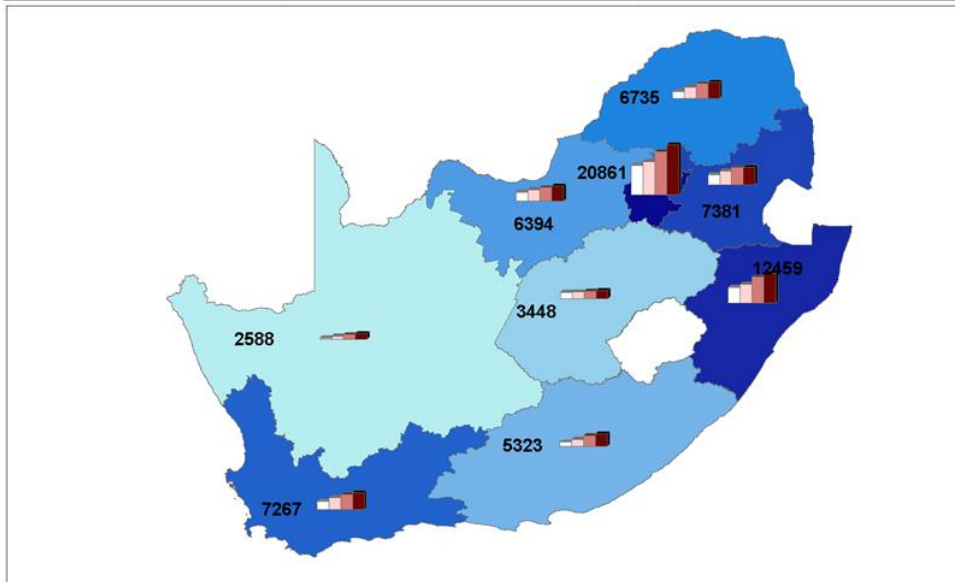
- For 2030 to 2040 will replace decommissioned coal with new coal – this will not increase coal component – however location will be different
- Note that this is 17 GW of decommissioned coal generation
- Wind is given a 30% Capacity Credit Value (contribution at time of system peak) for the scenarios – based on the Wind Capacity Credit Study done in 2010 and IRP 2010 assumptions
- In BASE IRP scenario – will test impact on networks if wind output is only at 10% and if as high as 60%
- For GREEN scenario will replace nuclear with “base RE equivalent” as follows:
 - 60% CSP with storage
 - 25% equivalent of Wind (with CCV of 30%)
 - 15% of OCGT & CCGT

Mapping the Demand and Generation

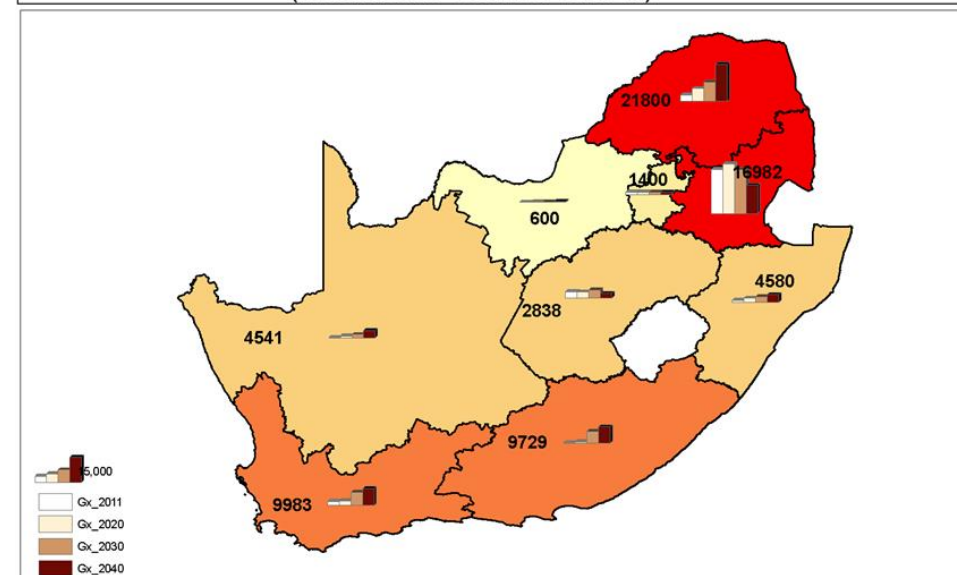
- First the Demand is allocated to each Municipal Area and then summated by province to get the total Load Demand for each province
- The Bars represent the relative Demand for 2011, 2020, 2030 and 2040 with the 2040 figure shown

- Secondly the Generation is allocated to each Municipal Area and then summated by province to get the total Generation for each province for each Generation Scenario
- The Bars represent the relative Generation for 2011, 2020, 2030 and 2040 with the 2040 figure shown

LOAD GROWTH BY 2040 PER PROVINCE
(Maximum Demand in MW)

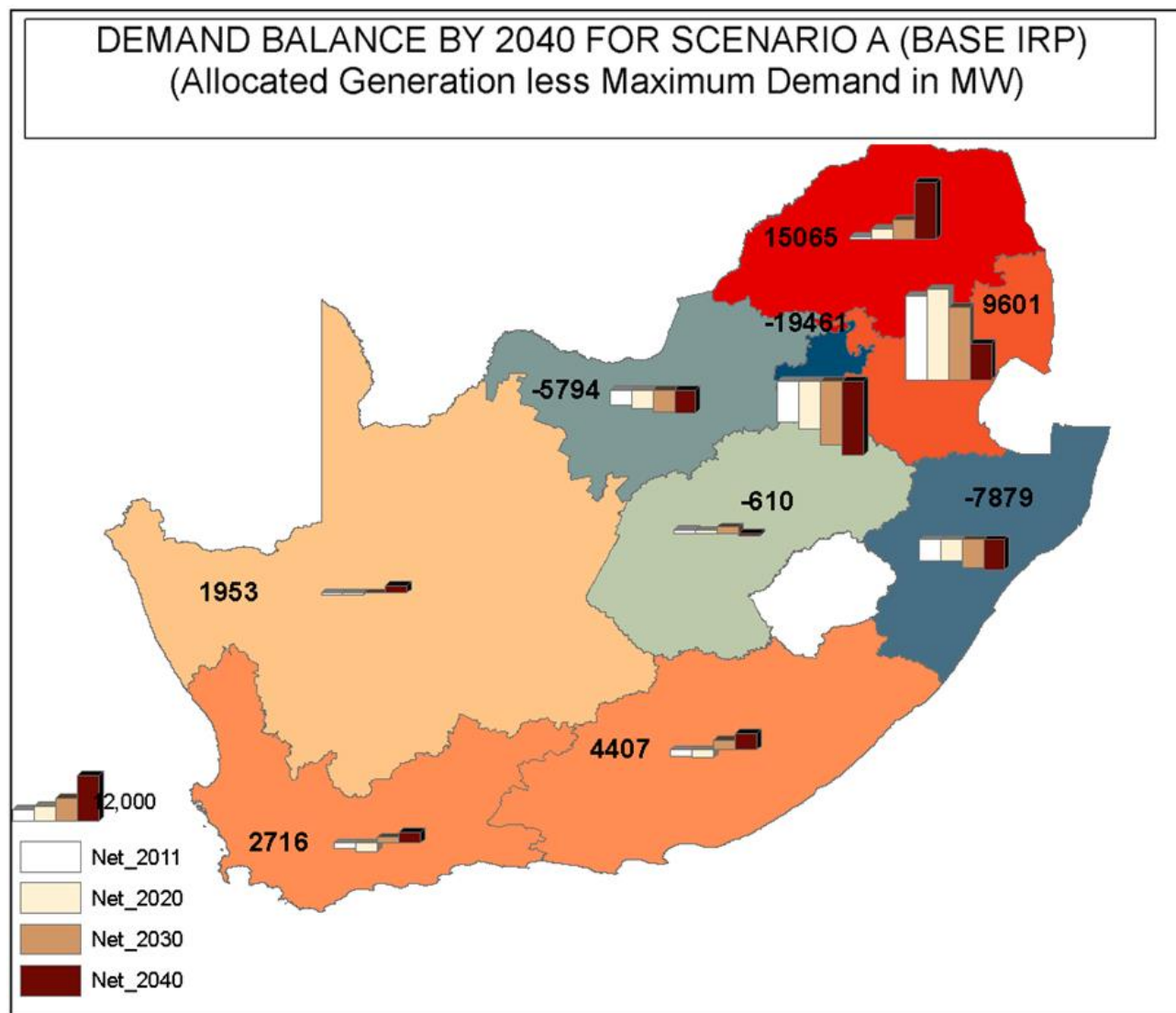


GENERATION DEVELOPMENT FOR SCENARIO A (BASE IRP)
(Maximum Demand in MW)



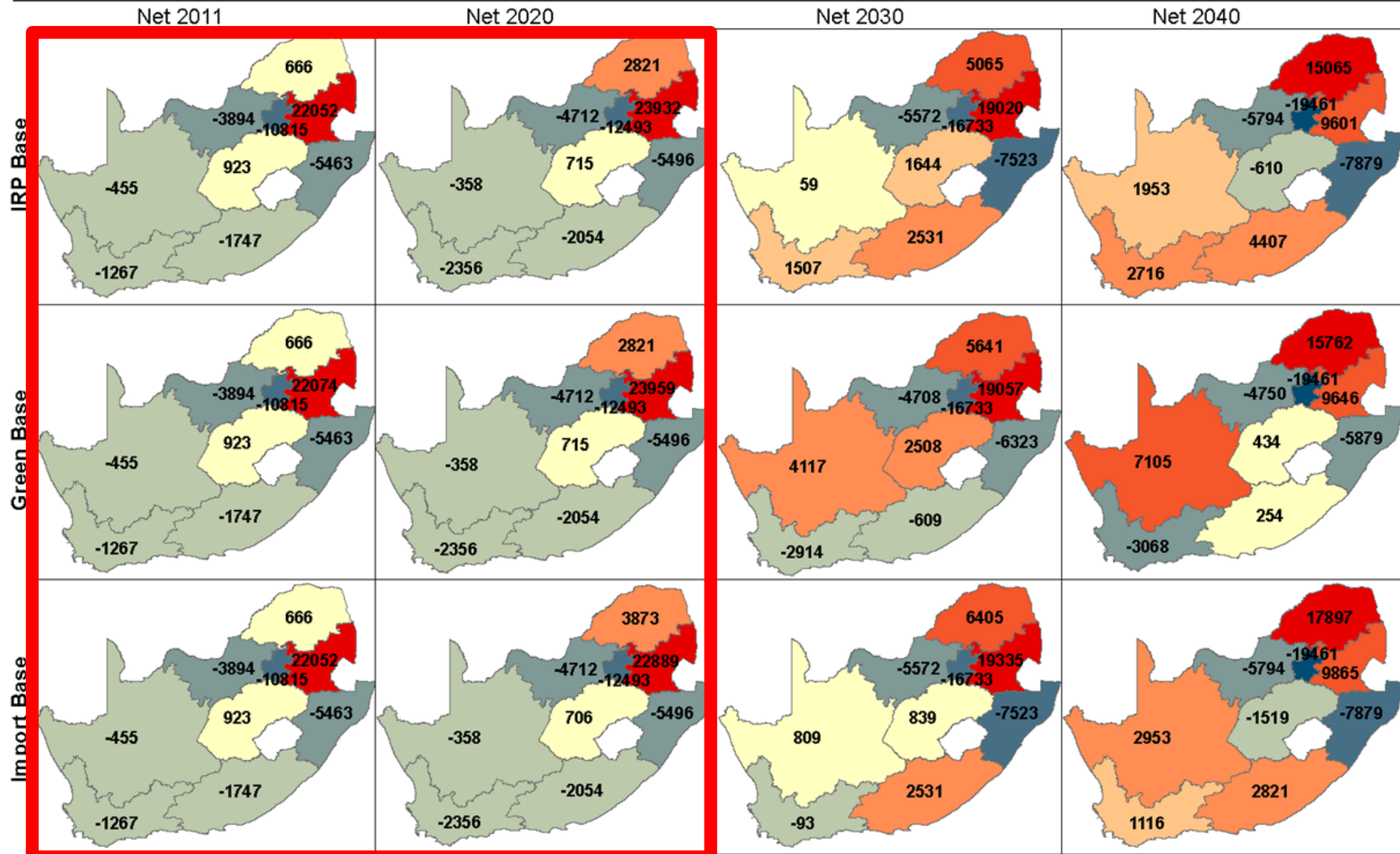
Mapping the Demand Balance up to 2040

- The Supply and Demand Balance value is then calculated for each Generation Scenario for each year to 2040 to determine the change over this period
- The 2011, 2020, 2030 and 2040 scenarios are presented in the report to illustrate the change over each decade
- The Bars represent the relative Demand Balance for 2011, 2020, 2030 and 2040 with the 2040 figure shown for Scenario A in this case
- All three Generation Scenarios can be mapped and compared to show the differences between the scenarios over time



Comparing Demand Balances for each Generation Scenario

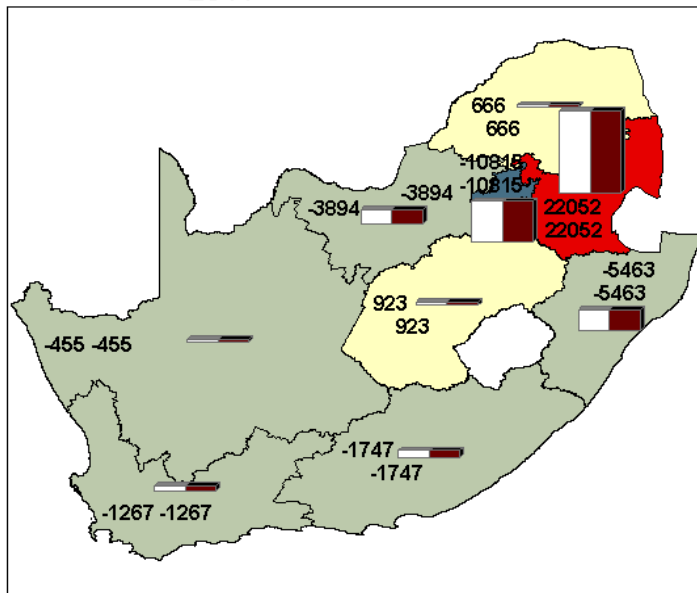
DEMAND BALANCE PROGRESSION FOR EACH SCENARIO (Installed Generation less Maximum Demand in MW)



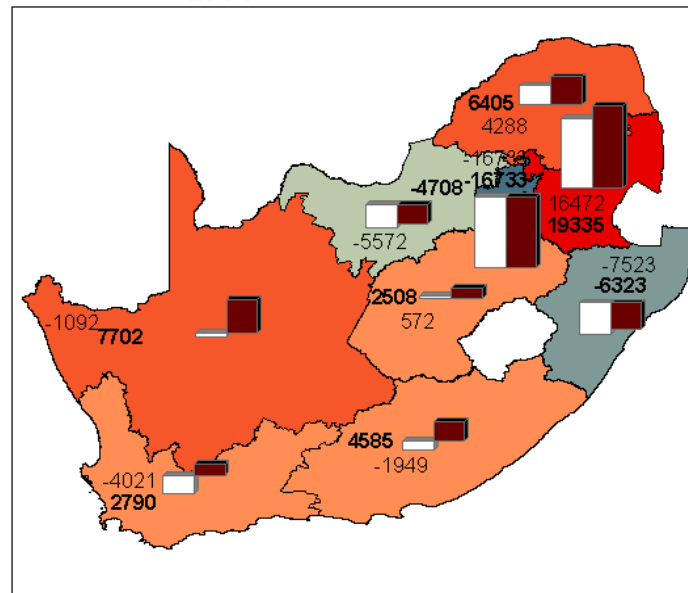
Marginal scenario difference for the TDP period

MAX & MIN DEMAND BALANCE PROGRESSION CONSIDERING ALL SCENARIOS (Allocated Generation less Maximum Demand in MW)

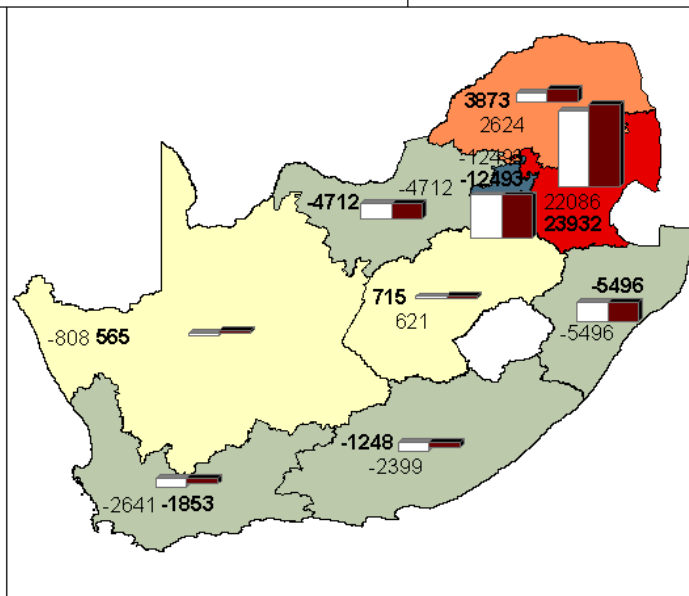
2011



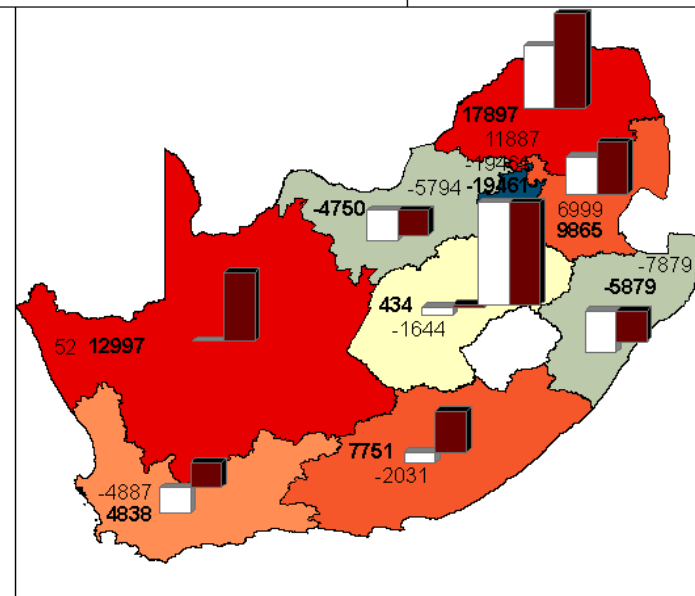
2030



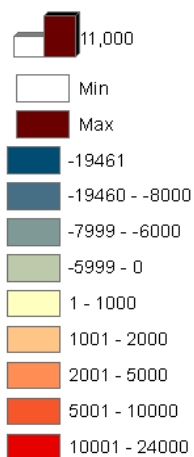
2020



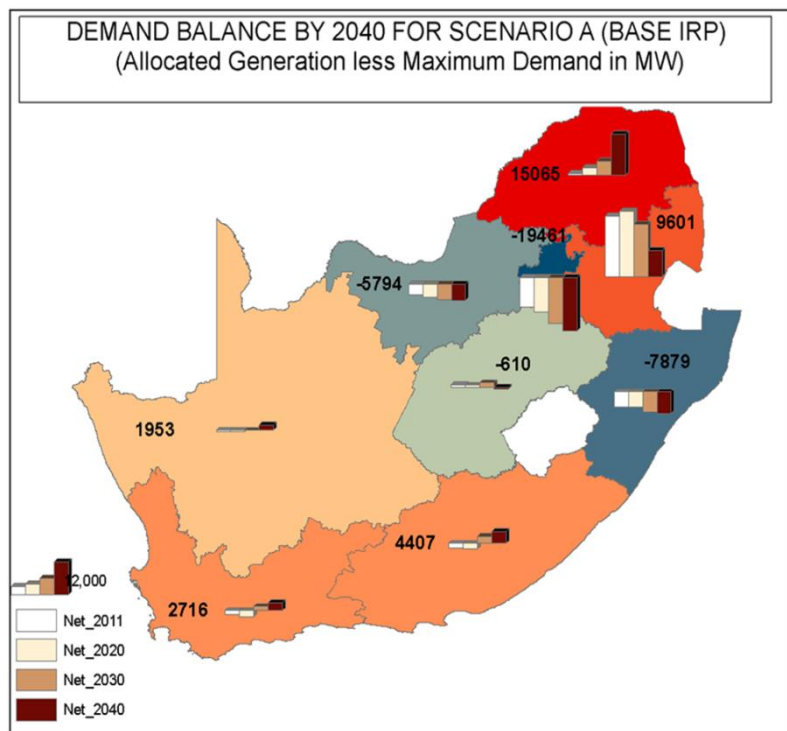
2040



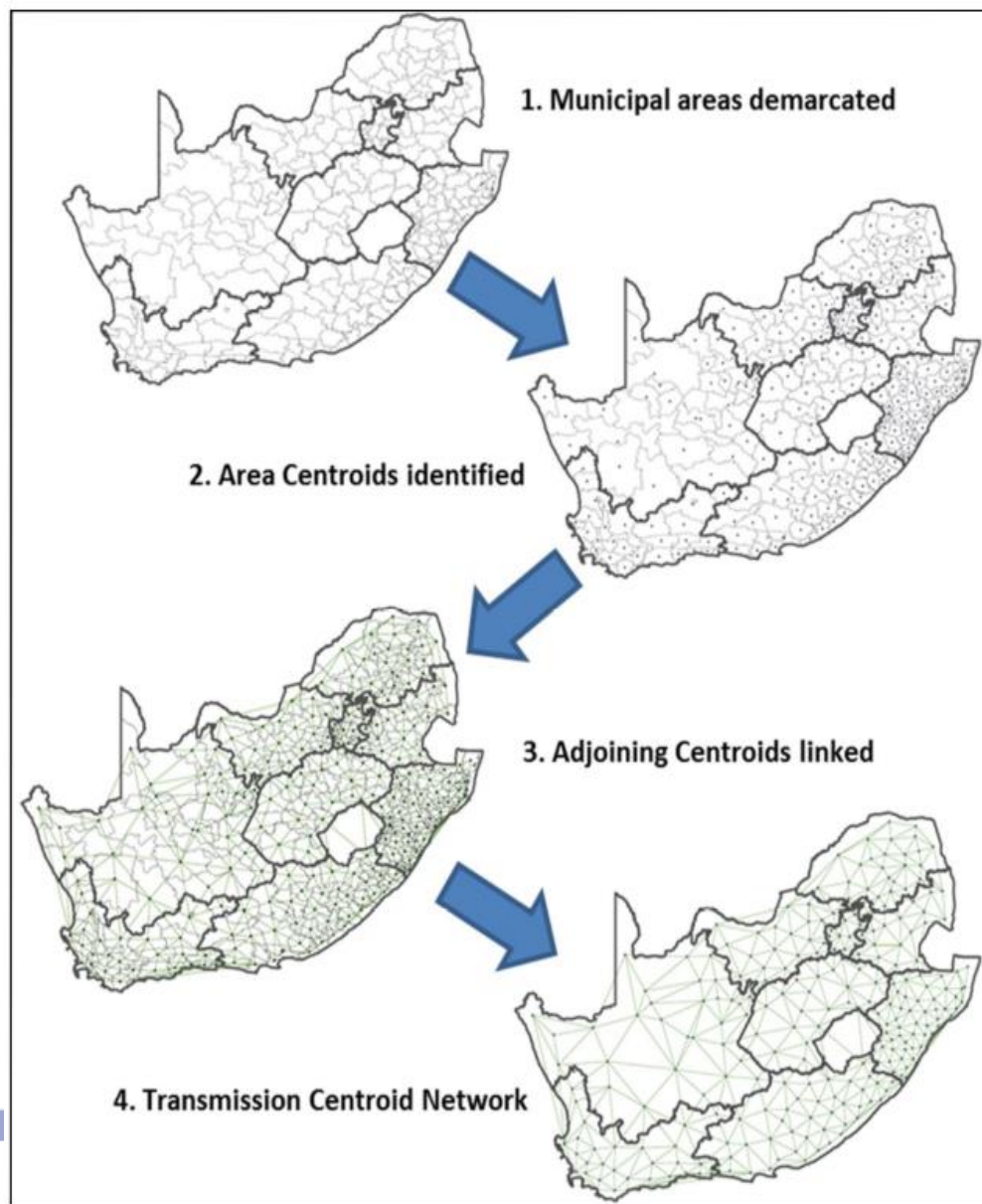
Legend



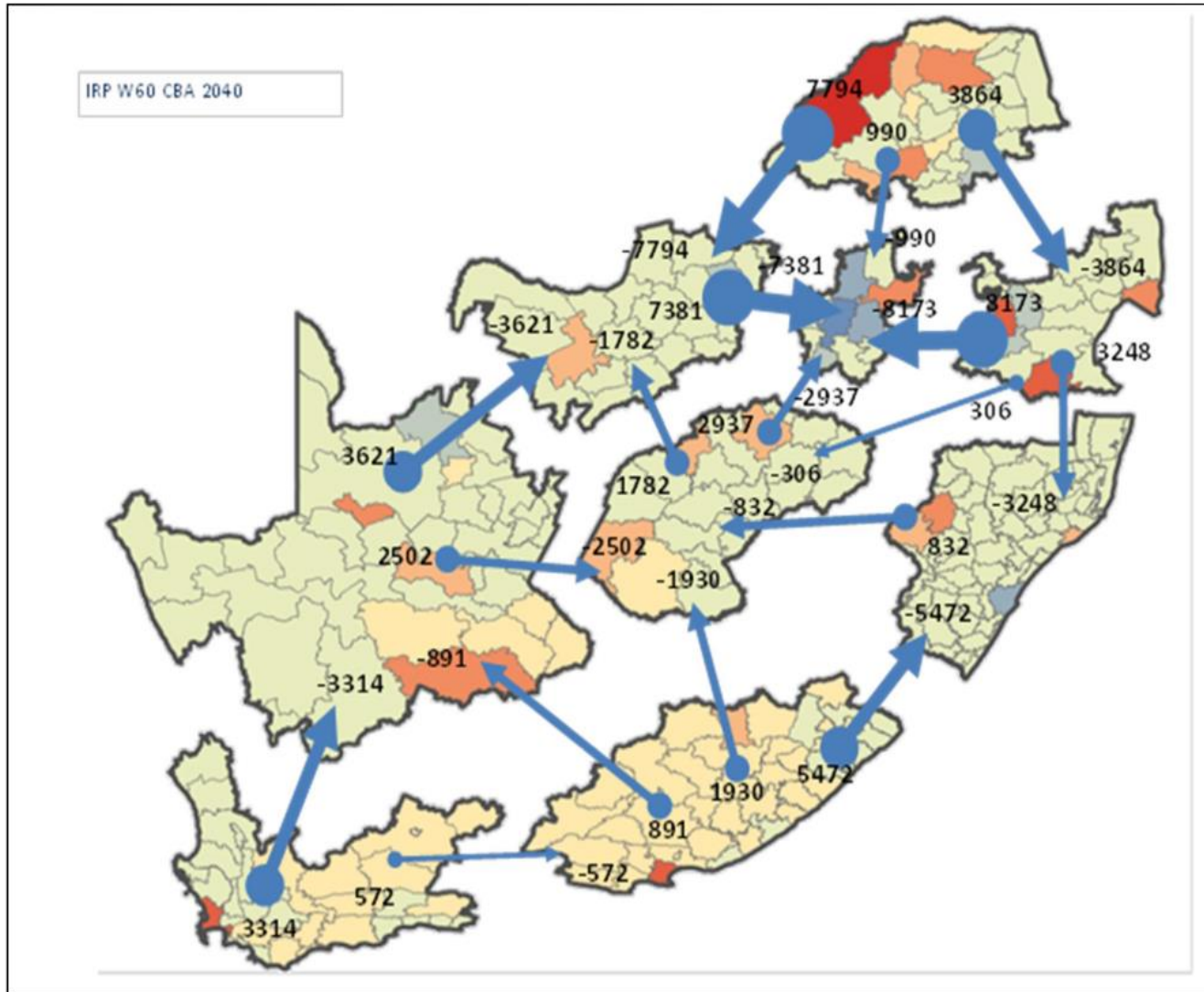
Transmission Centroid Network



Existing network ignored and a “relative impedance” copper plate assumed over country to determine preferred least resistance power flows – lowest losses

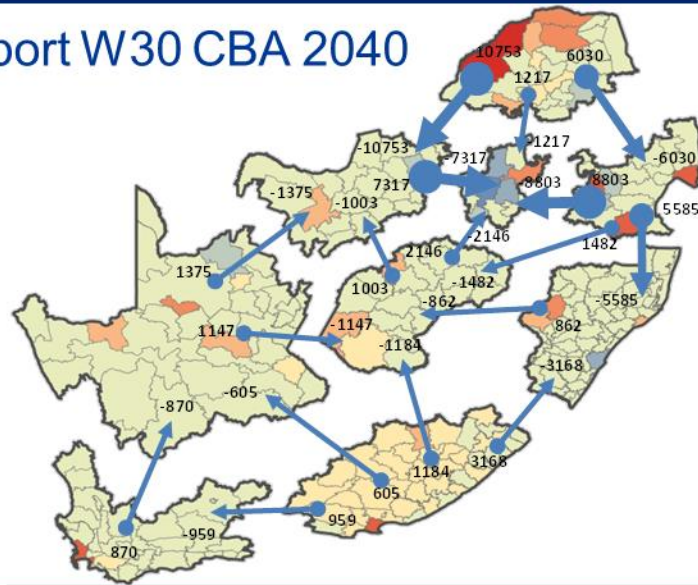


Inter-Province Power Transfers for IRP W60 CBA 2040 scenario

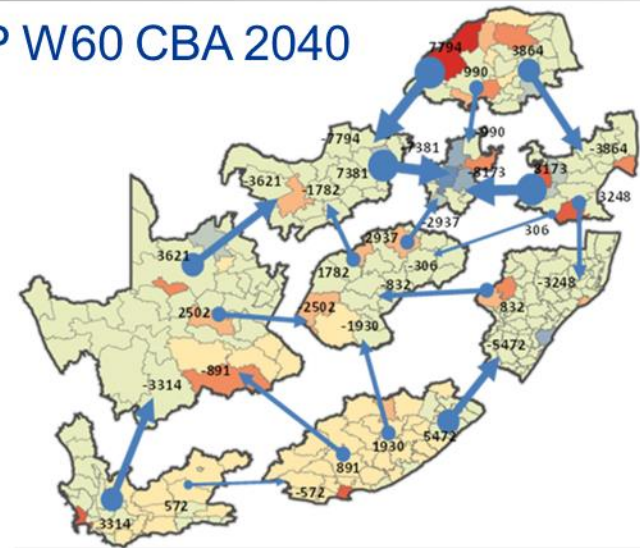


Inter-Province Power Transfers for 4 representative scenarios

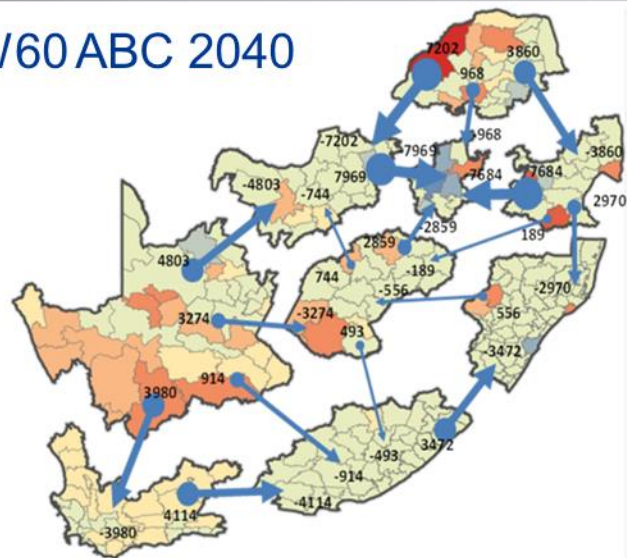
Import W30 CBA 2040



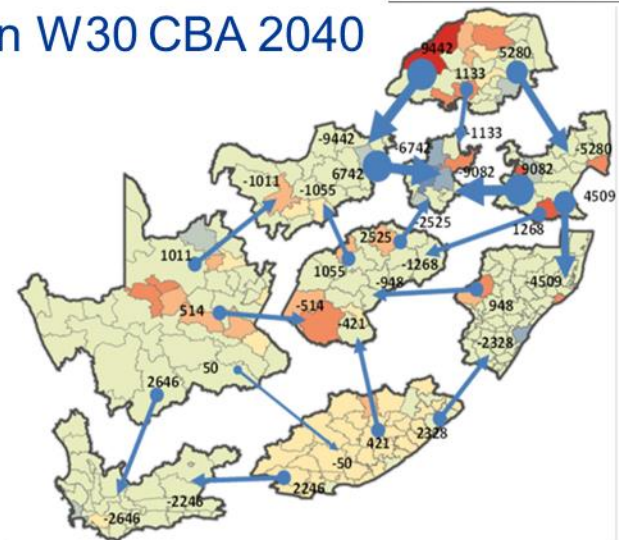
IRP W60 CBA 2040



Green W60 ABC 2040

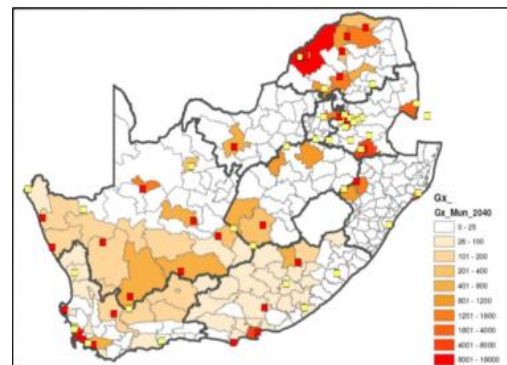
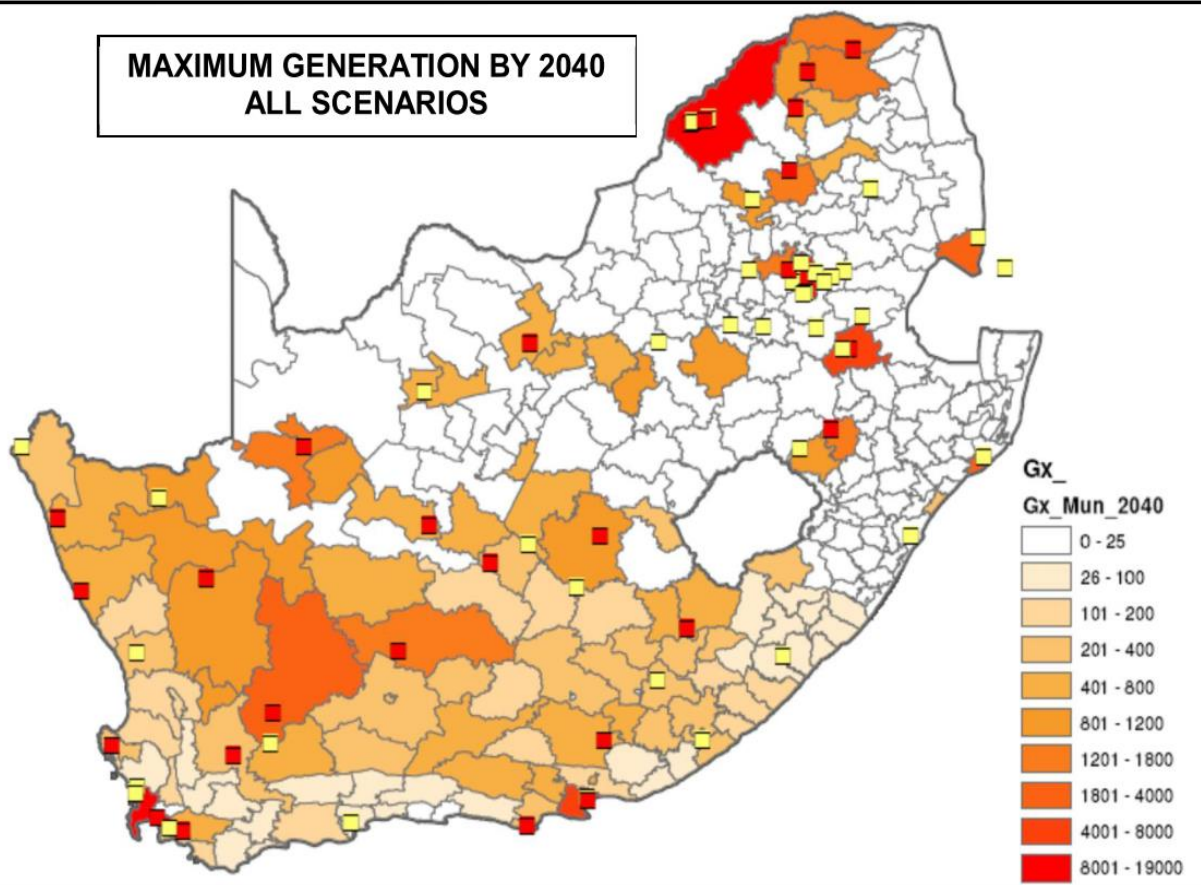


Green W30 CBA 2040



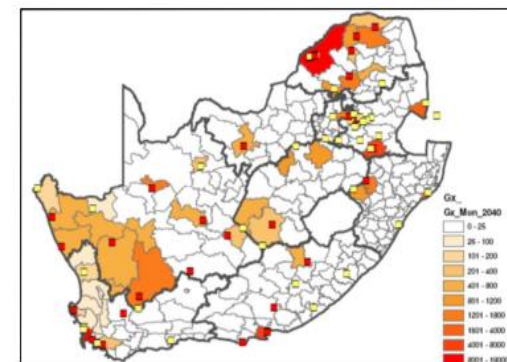
2040 Strategic Grid Planning – Generation Spatial Allocation

MAXIMUM GENERATION BY 2040
ALL SCENARIOS

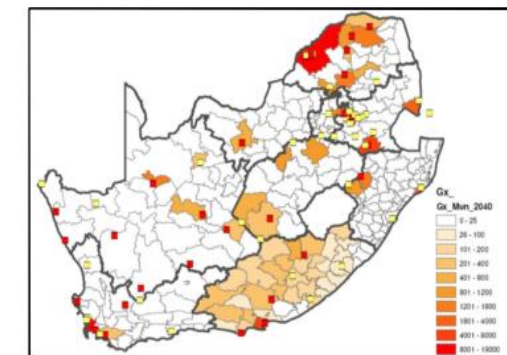


Base IRP
Scenario

Even
Spread of
Wind

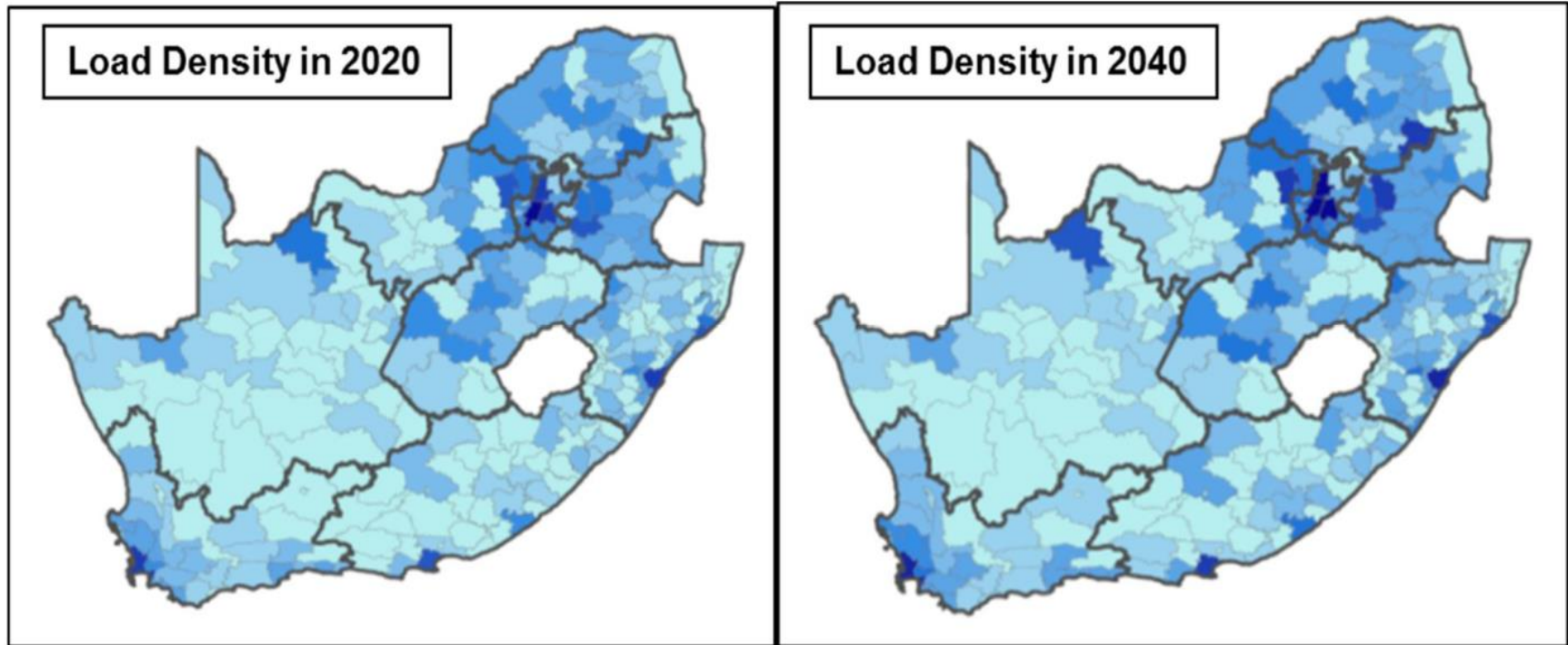


West to
East
Pattern of
Wind



East to
West
Pattern of
Wind

2040 Strategic Grid Planning - Load Spatial Allocation



There is no significant change in the location of the major load centres from 2020 to 2040.

The existing load centres merely get larger and denser

Load in the Steelpoort/Lydenburg area grows rapidly at the expense of Rustenburg

2040 Strategic Grid Planning – Consolidation of Inputs

National Planning Scenario's

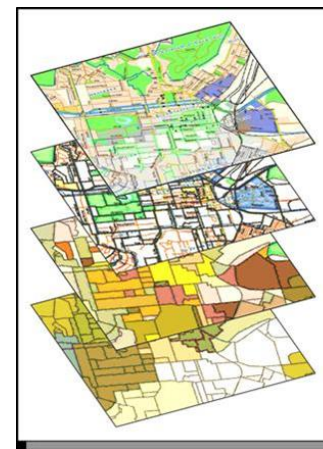
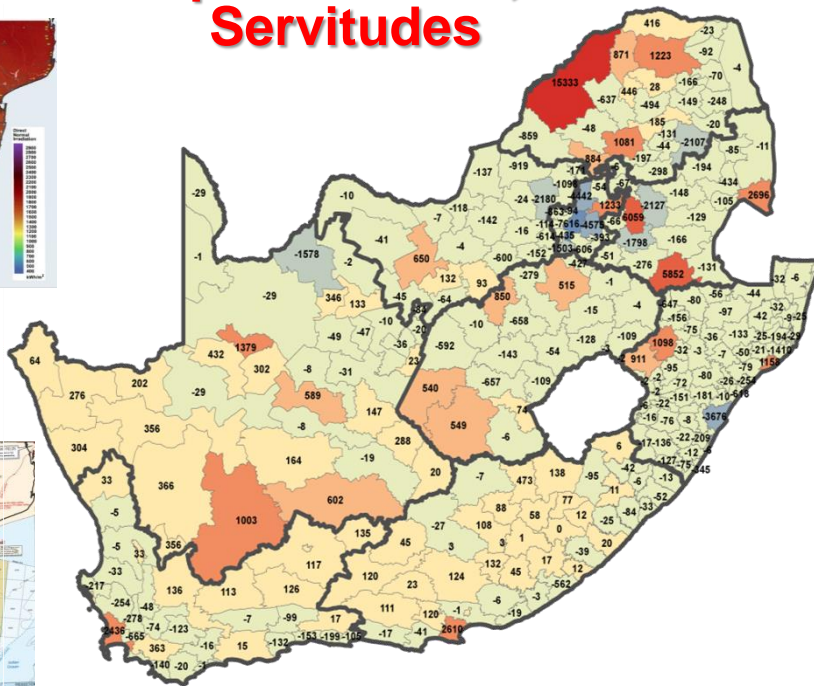
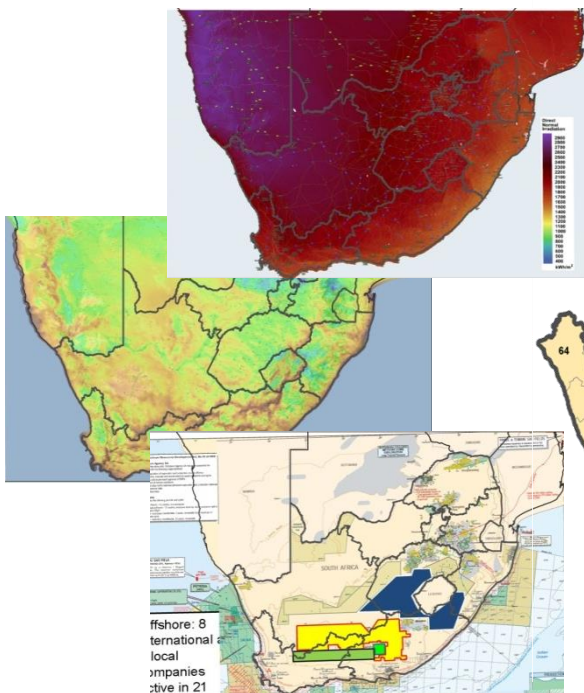
Supply options

Spatial & Economic impact

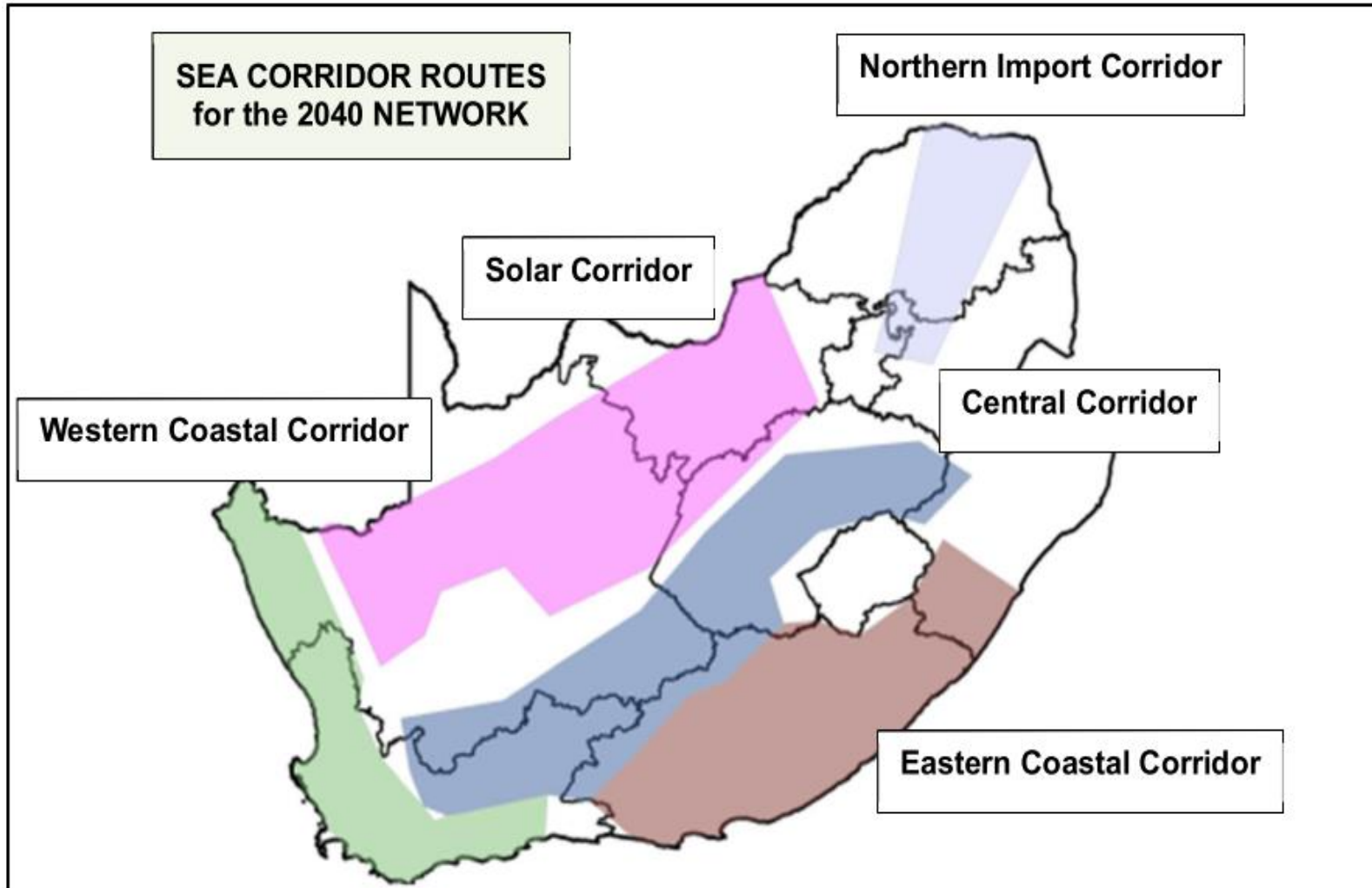
Demand options

Spatial & Economic impact

Common Least regret Spatial Development Plans, EIA & Servitudes



2040 Strategic Grid Planning – SEA Corridors

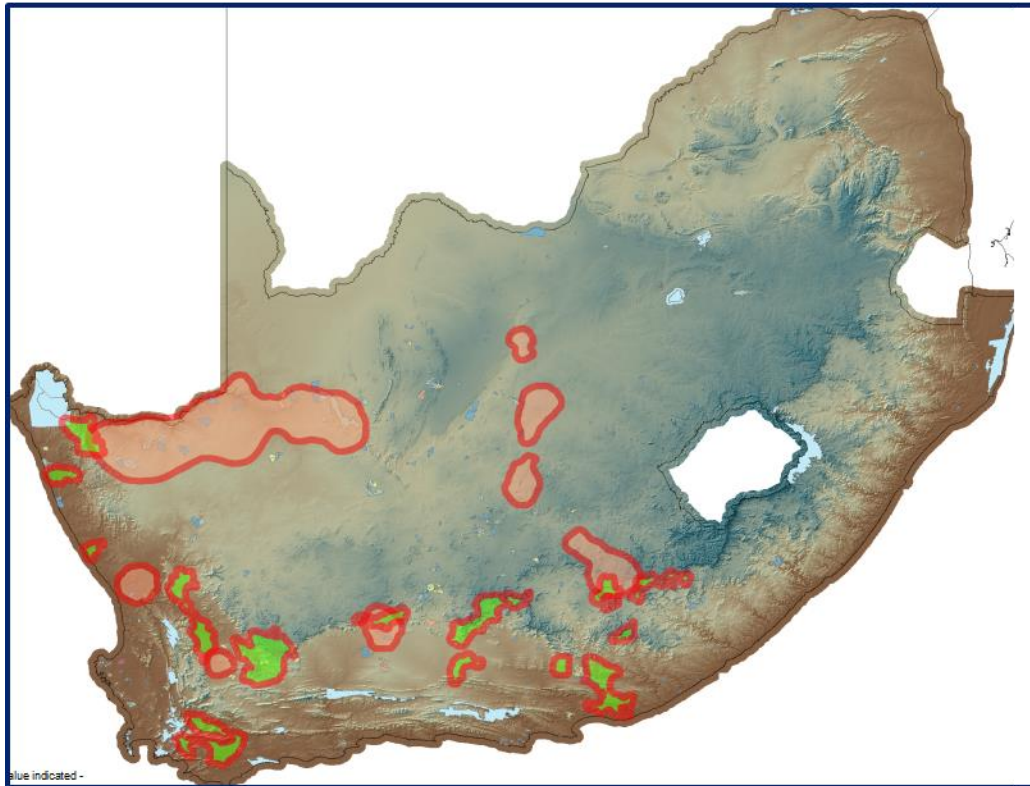


Analysis of the inter-province power flows across the generation scenarios and loading conditions start to indicate where the power flows concentrates under all scenarios.

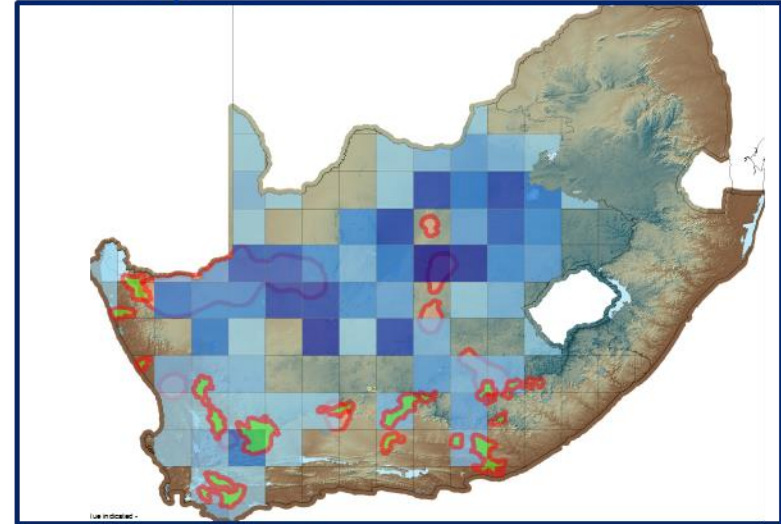
Five major corridors were identified for the future strategic development of the Tx Grid

2040 Strategic Grid Planning – Correlation with Investor Interest

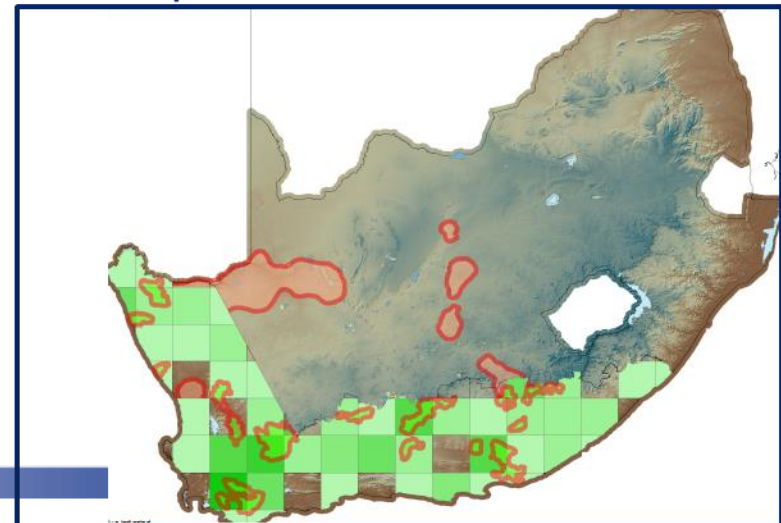
SEA - Wind and Solar Preferred Location



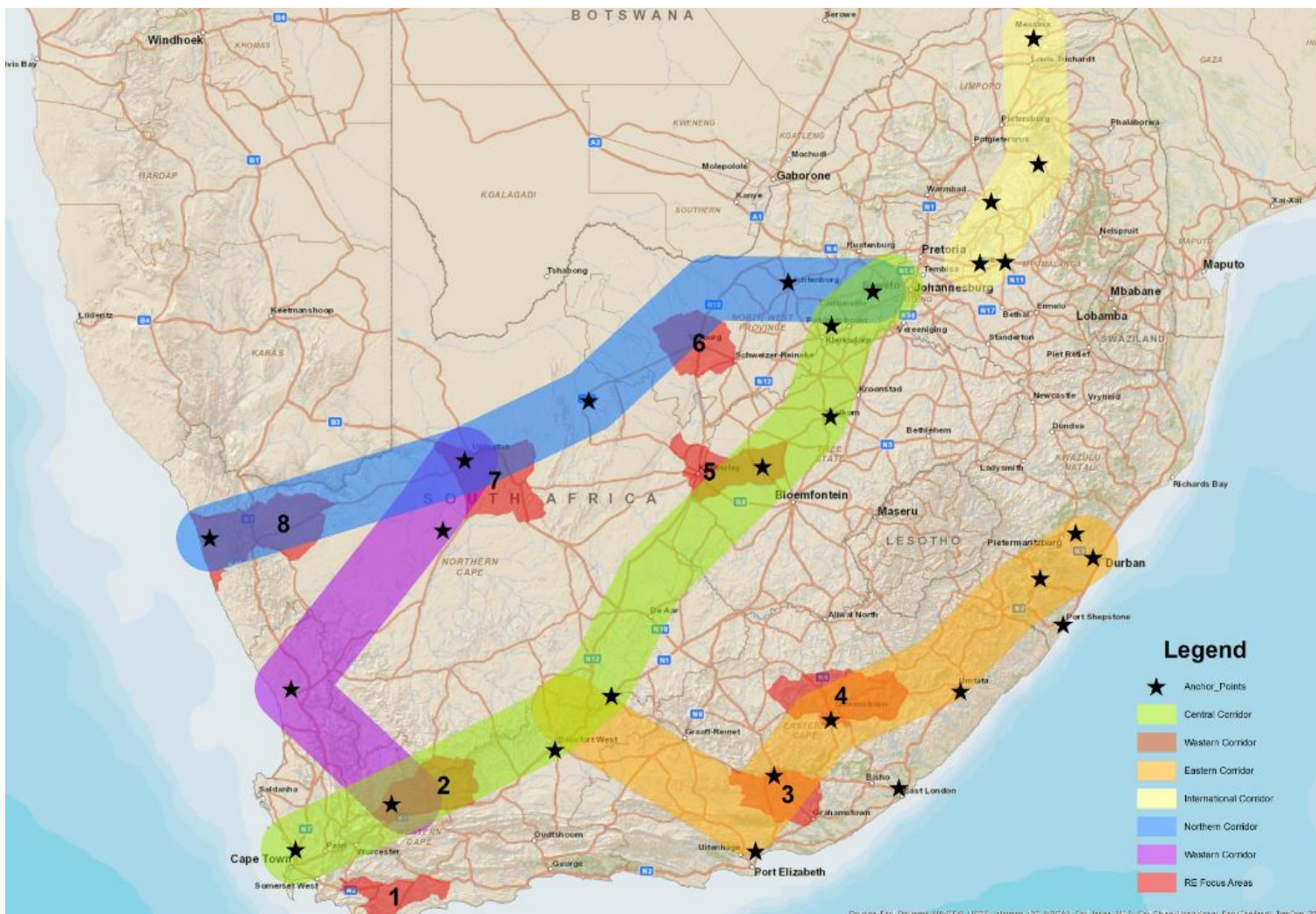
Developers - Solar Preferred Location



Developers – Wind Preferred Location



2040 Strategic Grid Planning – Final SEA Corridors

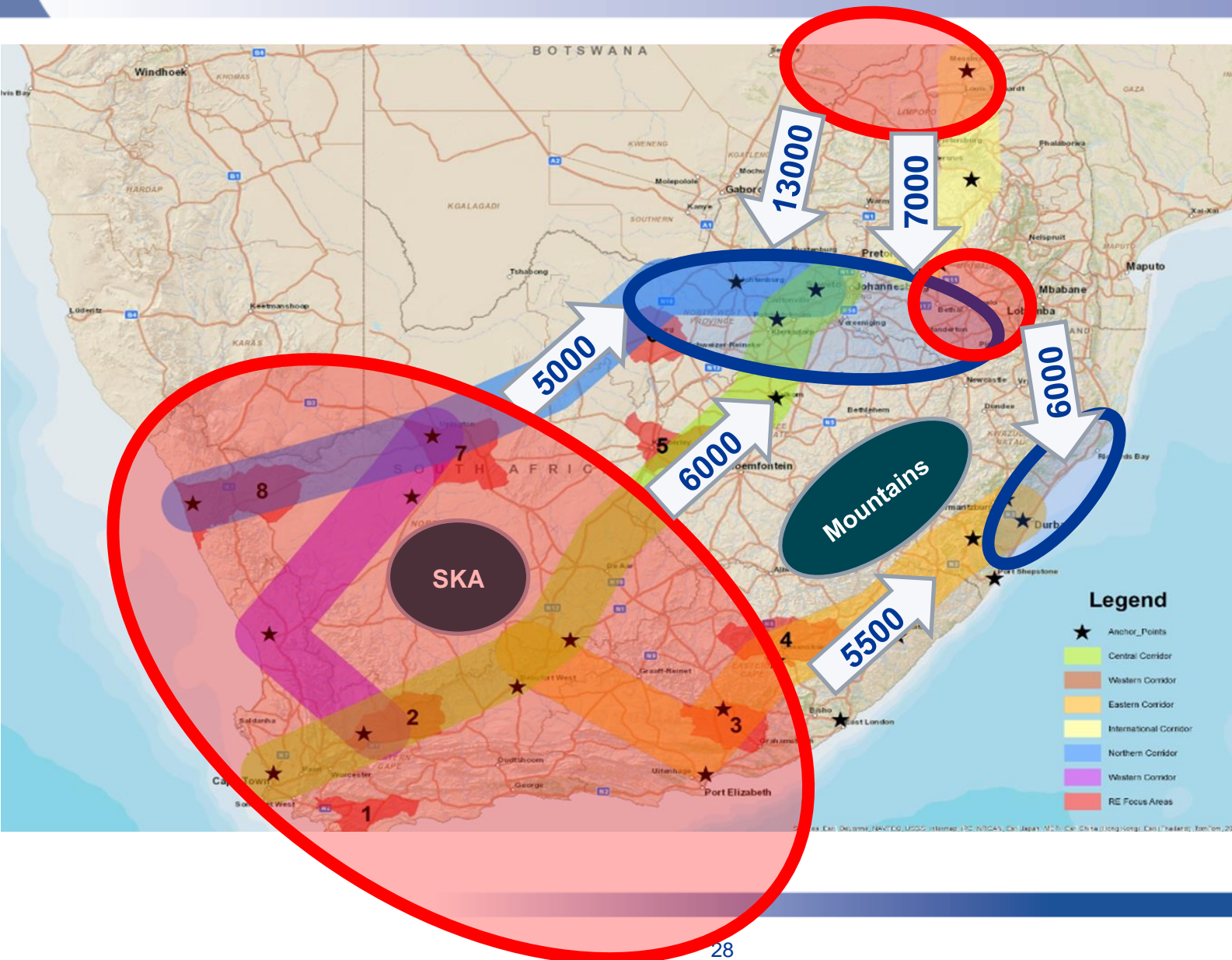


The “National” power corridors were then further refined and consolidated into five Major Transmission power Corridors.

These were then used as the basis for a national SEA study project by the DEA. This forms part of the SIP 10 project of the Govt. NDP.

The objective is to secure all the needed environmental approvals for Tx lines within the corridors which will be valid in perpetuity.

SGP Tx 2040 Study Corridor Overview



Impact of Provincial & Local Govt. Development Plans

- The 5 SEA Corridor Routes based on available information and known expectations.
- Provincial & Local Govt. Development Plans need to recognise these corridors and accommodate them.
- More importantly can your Development Plans be “seen” in the power corridors – i.e. are your needs been addressed?
- Objective of Workshop is to discuss to see how can power corridors support the local development plans and ensure the Transmission & Distribution electrical networks are accounted for into the future.

THANK YOU