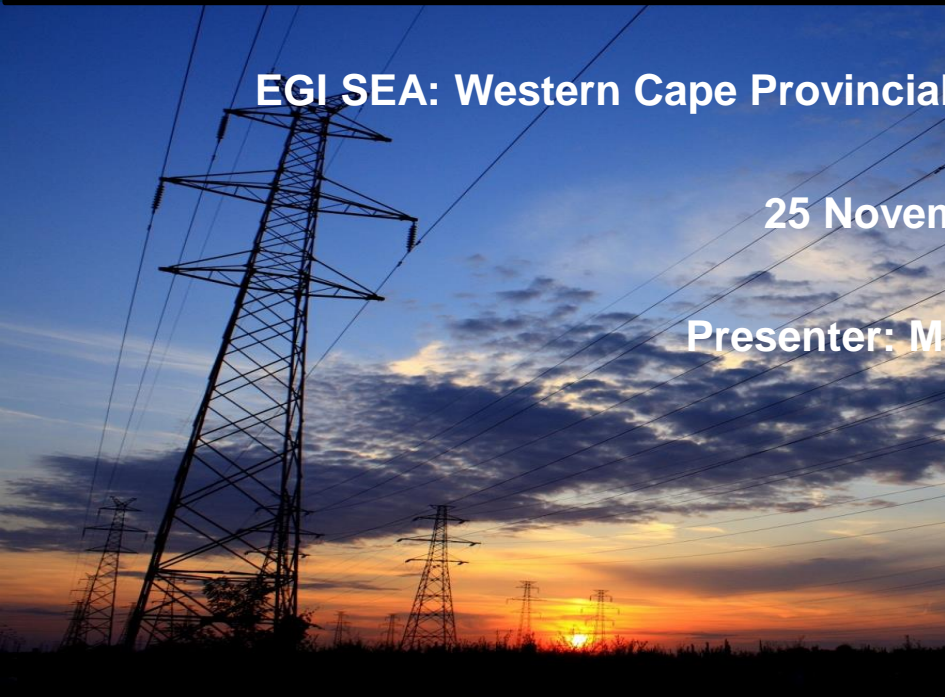




FEEDBACK SESSION



EGI SEA: Western Cape Provincial and Local Government Workshop

25 November 2014

Presenter: Marshall Mabin

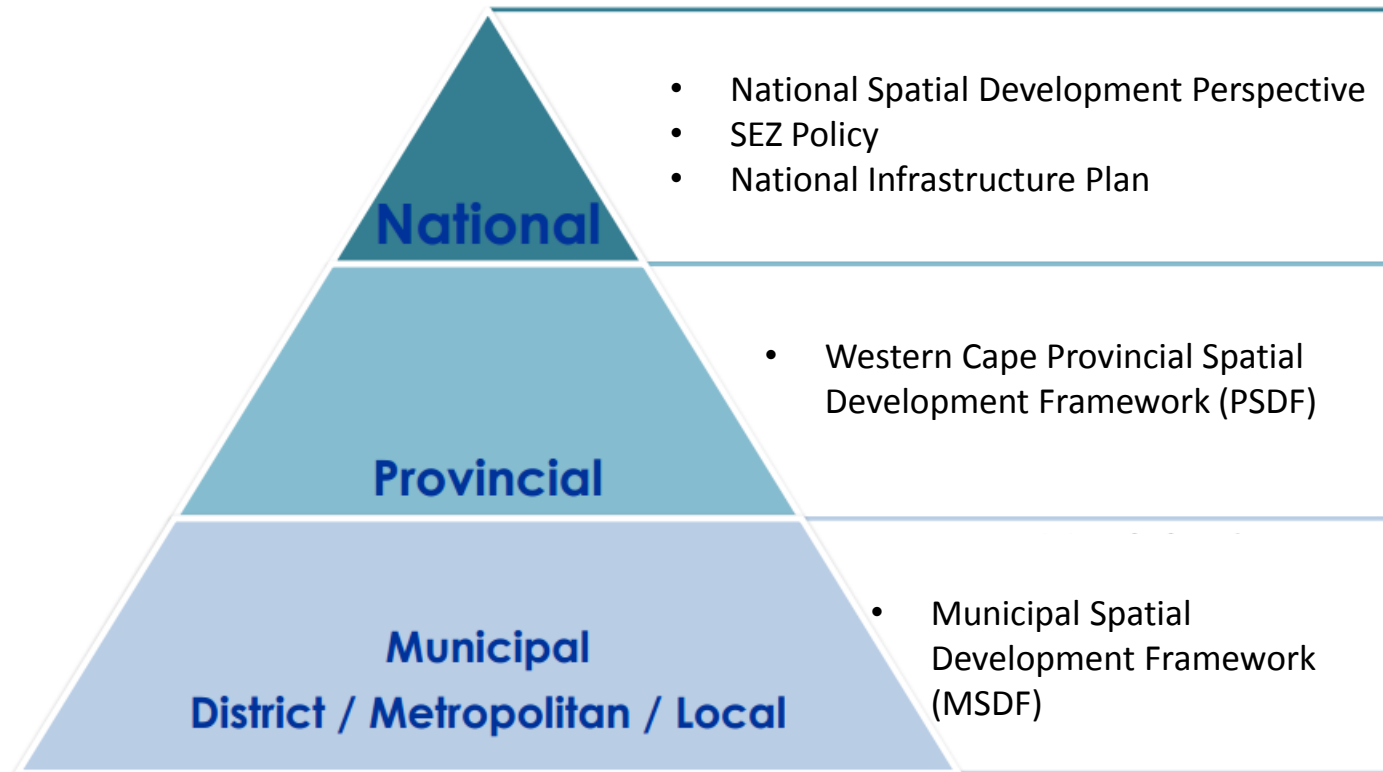


environmental affairs
Department:
Environmental Affairs
REPUBLIC OF SOUTH AFRICA



SDF Review and Demand Mapping Process

- **Objective:** Spatially locate and map the proposed future development areas within the province/municipalities where the provision of bulk electricity/ transmission infrastructure may be required to support such development.



SDF Review Outputs

- **Outputs**

- Three maps illustrating priority development areas at a 10km x 10km resolution within the buffered corridor extent.
- Priority development areas categorised as follows:

	Planning Category	Planning Category Definition
1	Industrial Expansion	Denotes an area that is either an existing heavy industrial area where there is planned expansion or a new area which has been set aside for heavy industrial development.
2	SEZ or IDZ	A purpose built industrial or manufacturing estate which might contain one or multiple Customer Controlled Areas or other formalized incentives to attract economic development or beneficiation activities to these areas.
3	Priority Mining Area	An area set aside for either existing or future mining activity.

Feedback Exercise

- **Task Objective**

- Participants to review and recommend changes to SDF mapping outputs based on latest provincial and municipal spatial plans

- **Whose inputs are needed?**

- Relevant provincial sector departments responsible for areas concerning:
 - Economic, infrastructure and industrial development;
 - Trade and sector development;
 - Development planning
- Municipalities falling within the buffered corridor extent, including:

Metropolitan	District Municipality	Local Municipality
	Cape Winelands	Breede Valley
		Drakenstein
		Langeberg
		Stellenbosch
		Witzenberg
	Central Karoo	Beaufort West
		Laingsburg
		Prince Albert
	Overberg	Theewaterskloof
	West Coast	Bergrivier
		Cederberg
		Matzikama
		Saldanha Bay
		Swartland
City of Cape Town		

Feedback Exercise

Exercise Steps

1. Relevant departments/ municipalities to review each map in combination with 'Attributes Table'.

Free State							
Cell Ref	Industrial expansion	SEZs or IDZs	Priority mining	Additional information	Source 1	Source 2	Source 3
DR86	YES		YES	Solar and carbon credit area Diamond Mining	Spatial Development Framework Xhariep District municipality 2012	Free State Province: Provincial Spatial Development Framework 2014	
DR87	YES		YES	Solar and carbon credit area Diamond Mining	Spatial Development Framework Xhariep District municipality 2012	Free State Province: Provincial Spatial Development Framework 2014	
DR88	YES		YES	Solar and carbon credit area Diamond Mining	Spatial Development Framework Xhariep District municipality 2012	Free State Province: Provincial Spatial Development Framework 2014	
DR89			YES	Goldfields	Spatial Development Framework Xhariep District municipality 2012	Free State Province: Provincial Spatial Development Framework 2014	

2. Identify 'shaded' or 'non-shaded' grid cells you would like changed on each of the maps based on your department/municipalities latest spatial development plans.
3. Record any required changes you would like made by completing the dedicated feedback form for each map.

Feedback Form

INSIDE CORRIDORS

SECTION 1: Deactivate Shaded Cells

GRID CELL REFERENCE NUMBER	COMMENTS

SECTION 2: Activate Unshaded Cells

GRID CELL REFERENCE NUMBER	SECTOR	ACTIVITY	COMMENTS

OUTSIDE CORRIDORS

SECTION 3: Identify 'Additional' Priority Areas

COORDINATES OR NEAREST TOWN	SECTOR	ACTIVITY	COMMENTS

Feedback Exercise

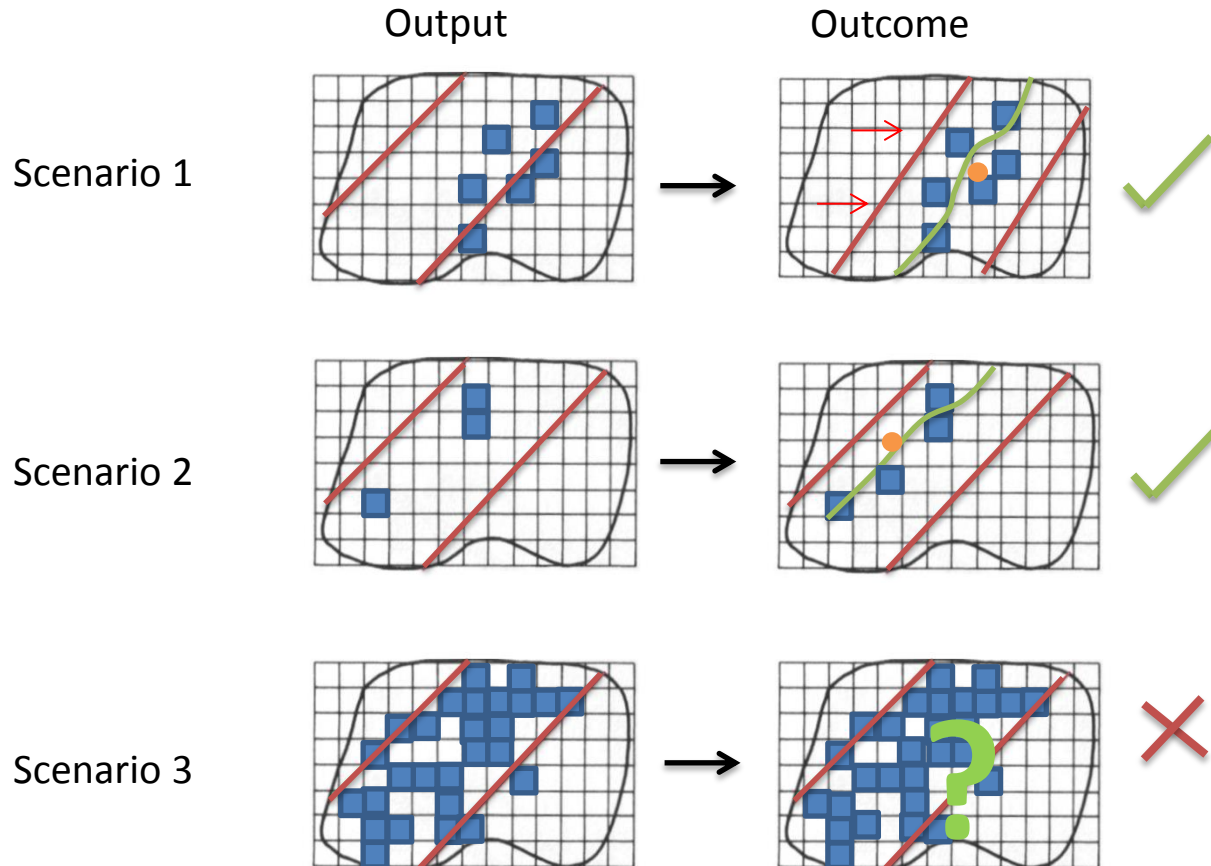
4. One feedback form to be completed for each map per department/municipality
5. Submit completed feedback forms either,
 - at the end of the session today, or
 - by email to Wisaal Osman: wosman@csir.co.za before **5th December 2014**.

General Comments

- Seeking accuracy, not precision.
- Areas outside of the corridor not excluded from future transmission infrastructure expansion.
- Please also send any documents you would like considered as part of the review (not captured in attributes table) to above details.
- This is your opportunity to influence the positioning of future transmission backbone for the Western Cape.

Outputs and outcomes

- The outputs from this exercise will be used to:
 - Inform the final placement of the corridors.
 - Assist Eskom with route determination and the identification of injection points.



Please can participants:

- Step 1: Gather into representative groups e.g. provincial department, district or local municipality.
- Step 2: Receive an exercise pack per group.
- Step 3: Nominate an individual to complete/champion feedback forms on behalf of relevant provincial department or municipality.
- Step 4: Discuss and propose changes (if any) to each of the three provincial category maps.
- Step 5: Record proposed changes to each map in the relevant category map feedback form.
- Step 6: Submit completed feedback forms at end of session.
- Step 7: In the instance where feedback forms are not submitted at end of session please submit to Wisaal Osman wosman@csir.co.za by **5 December 2014**.

Note: All exercise material available on EGI SEA website: <https://egi.csir.co.za/>

Thank You

Any Questions?