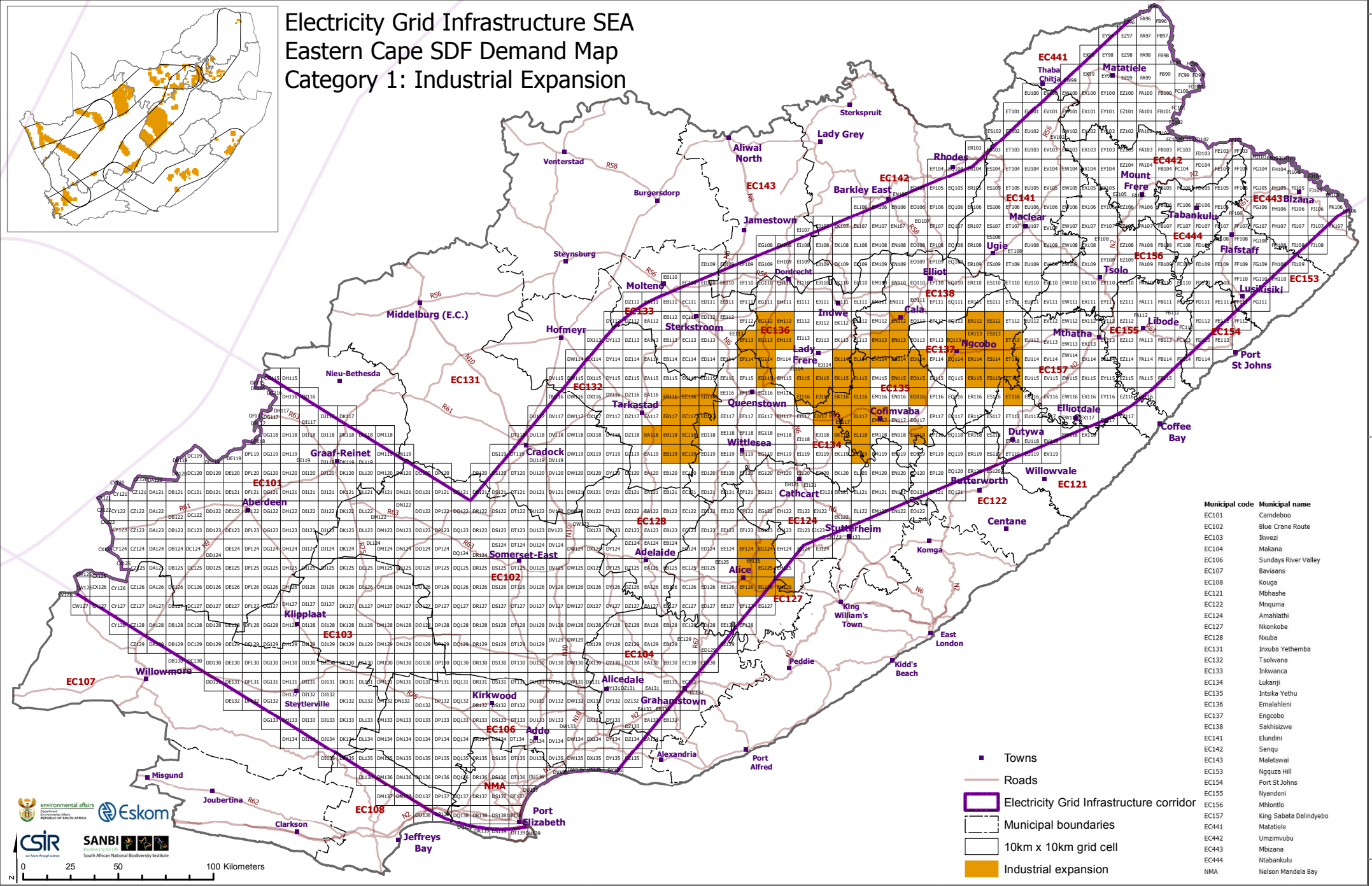
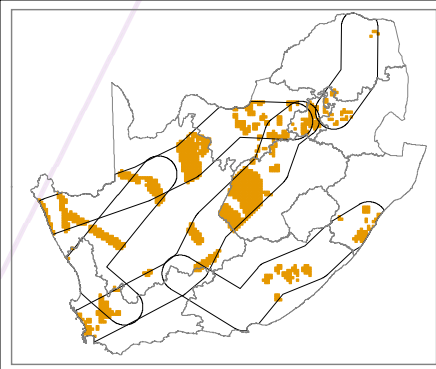


Electricity Grid Infrastructure SEA Eastern Cape SDF Demand Map Category 1: Industrial Expansion



| Municipal code | Municipal name |
|----------------|------------------------|
| EC101 | Camdeboo |
| EC102 | Blue Crane Route |
| EC103 | Ikwezi |
| EC104 | Makana |
| EC106 | Sundays River Valley |
| EC107 | Baviaans |
| EC108 | Kouga |
| EC121 | Mbashe |
| EC122 | Mnquma |
| EC124 | Amahlathi |
| EC127 | Nkonkobe |
| EC128 | Nxuba |
| EC131 | Inxuba Yethemba |
| EC132 | Tsolwana |
| EC133 | Inkwanca |
| EC134 | Lukani |
| EC135 | Intsika Yethu |
| EC136 | Emalahleni |
| EC137 | Engcobo |
| EC138 | Sakhisizwe |
| EC141 | Elundini |
| EC143 | Maletswai |
| EC153 | Nguqza Hill |
| EC154 | Port St Johns |
| EC155 | Nyandeni |
| EC156 | Mhloni |
| EC157 | King Sabata Dalindyebo |
| EC441 | Matiele |
| EC442 | Umzimvubu |
| EC443 | Mbizana |
| EC444 | Ntabankulu |
| NMA | Nelson Mandela Bay |

- Towns
- Roads
- Electricity Grid Infrastructure corridor
- Municipal boundaries
- 10km x 10km grid cell
- Industrial expansion

32°0'0"S

34°0'0"S

30°0'0"E

32°0'0"E

34°0'0"E

24°0'0"E

26°0'0"E

28°0'0"E

30°0'0"E

24°0'0"E

26°0'0"E

28°0'0"E

30°0'0"E